

Medicine Time is Jelly Time!
With NOMERUMON you don't need **water, cups, or spoons!**



taking medicine so simple

NOMERUMON



Slippery jelly for taking medicine

Expiration date: 4 years
(room temperature)

Anytime!

Small size and easy to carry.
It can be put into your bag or pocket
and can be used at any time.



Anywhere!

With NOMERUMON no extra water
is needed for taking medicine.

No need to drink water
with my medicine.
Fewer bathroom trips!



Great for travel!
I don't have to worry
about the water
quality abroad.

Carrying water for
taking medicine is heavy!
Lighter loads!



Anyone!

Children, seniors, ...
anyone can easily take their medicine!



It tastes great!
I don't hate
medicine
anymore!



NOMERUMON How To Use

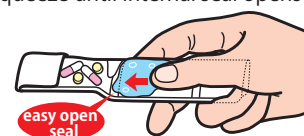
① Put medicine inside



② Fold in half lengthwise



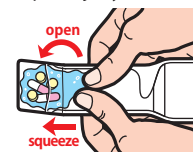
③ Squeeze until internal seal opens



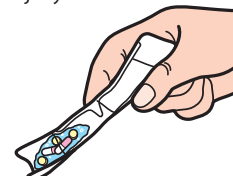
④ Knead gently until medicine is coated



⑤ Squeeze to push jelly coated medicine to front



⑥ Swallow jelly coated medicine



※Effectiveness will vary based on individual. Consult your doctor if you suffer from a swallowing disorder.
※Images are for illustrative purposes only. Actual product may vary.

●Name: Drinking water (jelly drink) ●Raw material: agar, Erythritol, thickener (Pectin, Locust bean gum, Xanthane gum), Acidulant, Flavouring agent, Calcium lactate ●Net content: 8g (1-pack) ●Storage: Keep in a cool dry place.

Nutrition
Information
(Per 8g)

Energy	0.480kcal	Na	1.184g
Protein	0.000g	P	1.920mg
Fat	0.000g	K	0.048mg
Carbohydrate	0.000g	Ca	0.096mg

MORIMOTO-PHARMA CO., LTD. <http://www.morimoto-iyaku.jp/english-top>

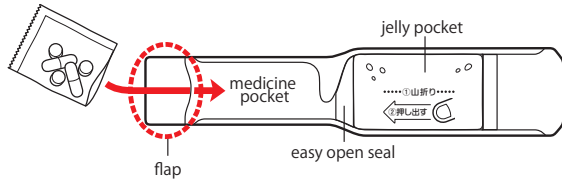
5-8-28 Mitejima, Nishi-yodogawa-ku, Osaka 555-0012, JAPAN Tel.+81-6-6476-5473 Fax.+81-6-6476-5573



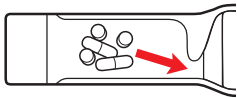
nomerumon.com

How to Use

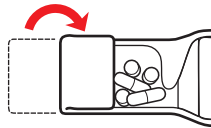
① Put medicine, supplements, etc. into the medicine pocket.



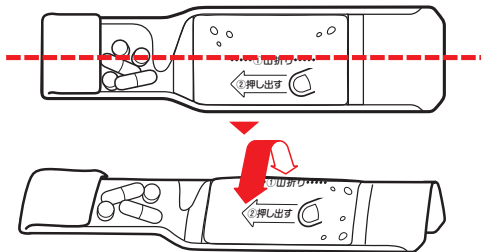
② Medicine should be close to easy open seal.



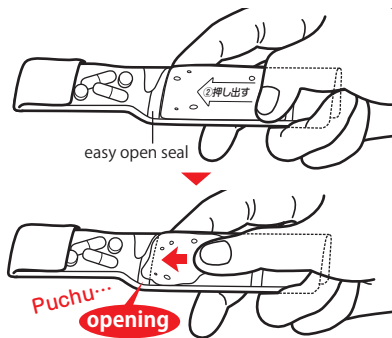
③ Fold flap.



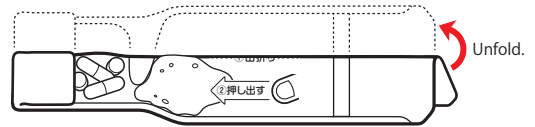
④ Fold in half lengthwise.



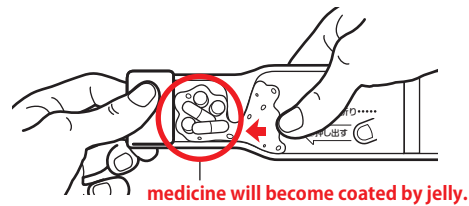
⑤ While folded, apply force to jelly pocket.



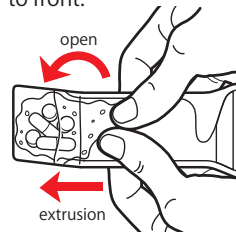
⑥ After easy open seal is opened, unfold.



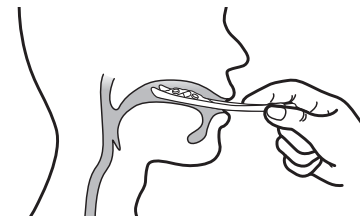
⑦ While pinching flap, mix jelly and medicine.



⑧ Push jelly coated medicine to front.

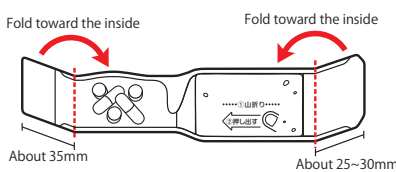


⑩ Insert "spoon" into mouth above tongue. Close lips and pull. Jelly coated medicine will be transferred to mouth. Swallow.

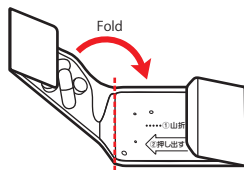


How to Fold (for easy carrying)

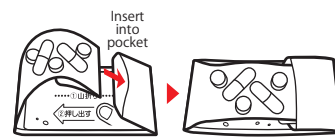
① After adding medicine, fold left and right sides.



② Fold along center crease.



③ Insert flap into the open pocket on the right.



④ It is now compact and easy to carry. Take medicine whenever needed, wherever you are.



※ Effectiveness will vary based on individual. Consult your doctor if you suffer from a swallowing disorder.

※ Images are for illustrative purposes only. Actual product may vary.