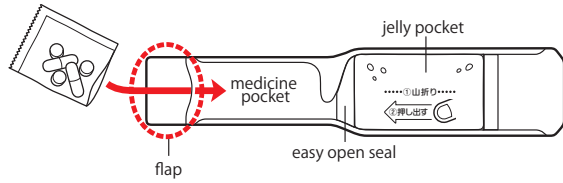
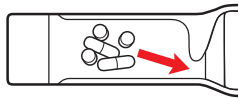


How to Use

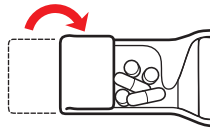
① Put medicine, supplements, etc. into the medicine pocket.



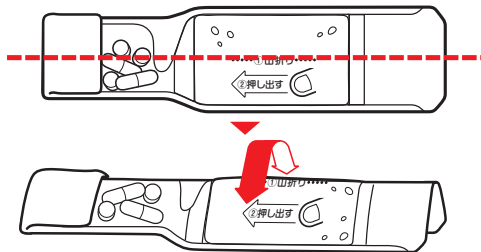
② Medicine should be close to easy open seal.



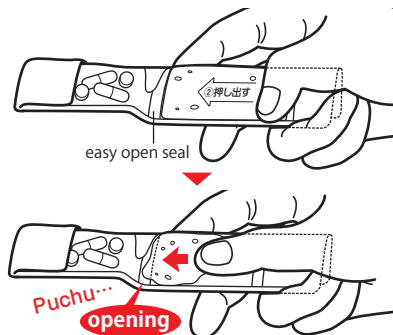
③ Fold flap.



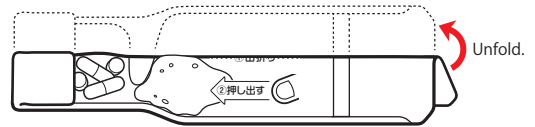
④ Fold in half lengthwise.



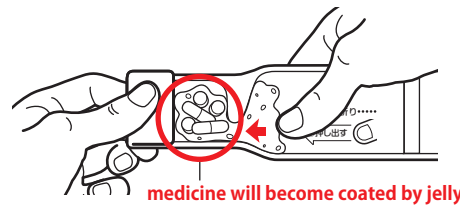
⑤ While folded, apply force to jelly pocket.



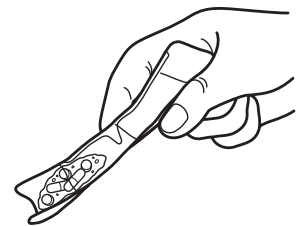
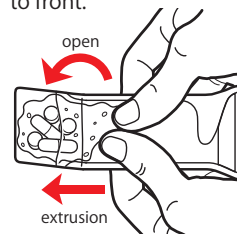
⑥ After easy open seal is opened, unfold.



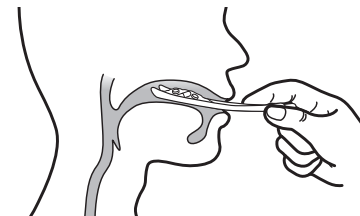
⑦ While pinching flap, mix jelly and medicine.



⑧ Push jelly coated medicine to front.

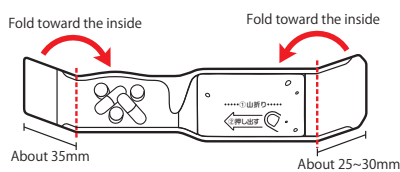


⑩ Insert "spoon" into mouth above tongue. Close lips and pull. Jelly coated medicine will be transferred to mouth. Swallow.

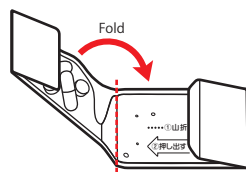


How to Fold (for easy carrying)

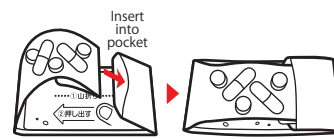
① After adding medicine, fold left and right sides.



② Fold along center crease.



③ Insert flap into the open pocket on the right.



④ It is now compact and easy to carry. Take medicine whenever needed, wherever you are.



※ Effectiveness will vary based on individual. Consult your doctor if you suffer from a swallowing disorder.

※ Images are for illustrative purposes only. Actual product may vary.